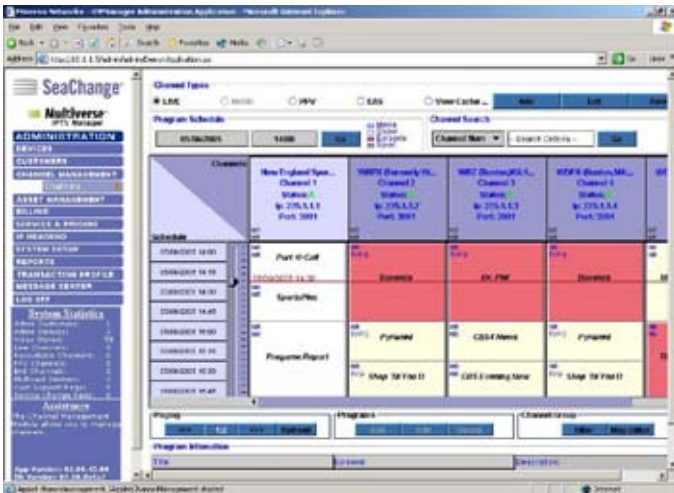


About SeaChange®

SeaChange International™ provides digital video systems that are changing television. Its powerful server and software systems enable television operators to provide new on-demand services and to gain greater efficiencies in advertising and content delivery.

Visit www.seachange.tv today.



SEACHANGE MULTIVERSE IP VIDEO MANAGER™

The Multiverse IP Video Manager Web browser interface displays a management interface to control broadcast channel configuration, EPG configuration, Subscriber data, VOD asset metadata and pricing, package management, message control center, and system usage statistics.

SeaChange IP Video Manager is built on Oracle's database engine, which delivers carrier-class scalability and reliability.

Key features of the SeaChange Multiverse IP Video Manager™ include:

- Menu Bar customization based on the Administrator authority level
- System statistics information display
- Online help
- Provisioning and management of STBs and other devices
- Subscriber Management System (SMS) for service activation, service requests, viewing billing record
- Channel Management package for building and maintaining channel line ups, including broadcast, PPV, and Emergency Alert Service (EAS) channels
- Content Management for maintaining VOD asset metadata
- Billing and Invoicing, including support for management billing period, tax rates, surcharges, and invoice generation
- Services and Pricing management for creation and maintenance of channel packages, subscription packages, service packages VOD asset pricing, and VOD bundles
- IP Headend system and network configuration and management, including configuration of broadcast channel encoders and video servers

- System configuration of Business and Administrator accounts, EAS configuration management, business rules management, and STB configuration
- Report Generation for tracking system usage, VOD and content usage
- Message Center for sending messages or alerts to subscribers
- Enterprise Application Integration (EAI) interface for integrating service operator's legacy systems using XML and XSL data interfaces
- CDK API for interfacing customer, service provisioning, and STB inventory data with external systems
- Billing Connector for extraction and integration of Billing Records with external systems
- NTSC and PAL support

SEACHANGE MULTIVERSE™ CLIENT FRAMEWORK

The Multiverse Client Framework includes a fully extensible STB Menu bar which allows subscribers to launch applications built for the Multiverse Platform. These applications include Subscriber Sign-in, EPG, VOD Client, Parental Control, Vault, Settings, Favorites, Search, E-mail, and Web.

An EPG is also included to access live channels and programming information. Subscribers can select programs for viewing or previewing, purchase PPV, and set program reminders.

STB Menu Bar

- Subscriber Sign-in that supports multiple users within a single household
- **EPG** – link to launch the Multiverse EPG
- **VOD Client** – link to launch the Multiverse VOD Client application
- **Parental Control** – enables the primary user to temporarily unlock parental controls
- **Vault** – contains a list of rented videos, PPV programs, program reminder flags, messages, and Caller-ID messages
- **Settings** – allows modification of user preferences, parental controls, view billing information, and upgrading packages
- **Favorites** – enables the subscriber to choose a list of favorite channels which can be displayed in the EPG
- **Search** – Searching through the EPG and VOD assets, including popup keyboard display
- **E-mail and Web** – ability to offering access to email and the web through the STB