



## SeaChange Spot Inserter 2648™

The SeaChange Spot Inserter 2648™ supports advertising insertion for up to 24 analog channels. The Spot Inserter 2648 makes very efficient use of rack space by combining an advertising server, integrated decoding, and video switching in a 4RU form factor.

The Spot Inserter 2648 operates within a Spot ad insertion system that includes a Spot database, video libraries, and tone suite. Standalone operation using an internal database is not supported.

The Spot Inserter 2648 can be configured in channel capacities up to 24 channels in increments of 4 channels by adding up to 6 Integrated Switch Decoder (ISD) quad channel kits. Each ISD quad channel kit supports 4 analog channels. The ISD quad channel kits can be installed in the factory or added in the field to increase Spot Inserter 2648 channel capacity as ad insertion needs grow.

The ISD combines the functions of a digital-to-analog decoder and an analog video switch. It selects between an analog network feed and a digital ad server feed, decodes the ad server feed when selected, and passes the selected feed on for cable distribution. Selection of the ad server feed is triggered by cue tones.

If the Spot Inserter 2648 or the ISD fails, a failsafe bypass relay passes network audio and video signals directly from input to output.

### FEATURES

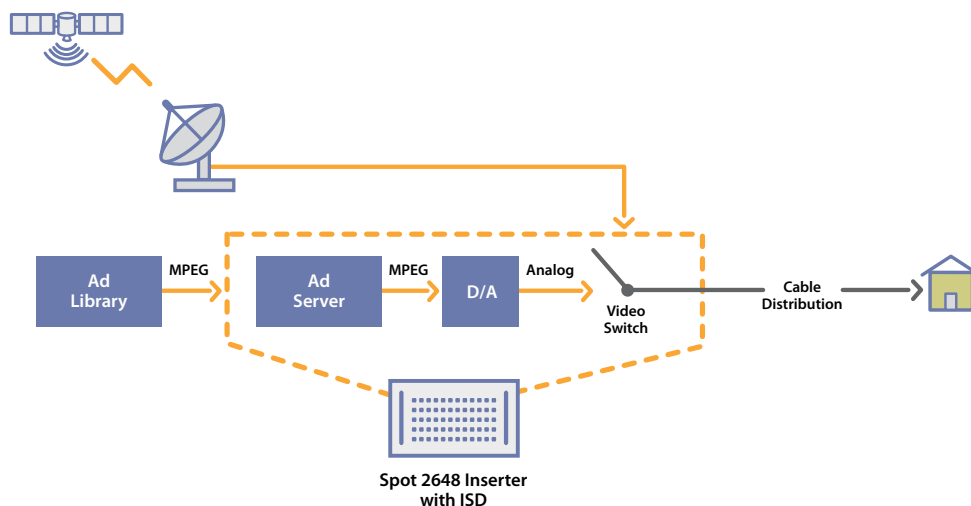
#### Hardware

- 4 rack unit (RU) chassis with ISD break-out panel
- 6 ISD quad slots
- Redundant 500W power supplies (110/220)
- Optional -48v power supplies
- Redundant fans
- Intel 1.4GHz Xeon Processor
- 512MB RAM
- 40 GB IDE hard drive (system)
- RAID controller
- Six 73GB RAID5 10K hard drives
- 10/100/1000 network interface
- DVD / CD-ROM drive
- External SCSI adapter
- 2 External USB 1.1 ports
- VGA adapter
- Keyboard and mouse adapters

#### Software

- SeaView server management utility
- ISD management utility
- Microsoft® Windows® 2003
- Microsoft® SQL client license
- VNC remote support license

#### One-year warranty and support

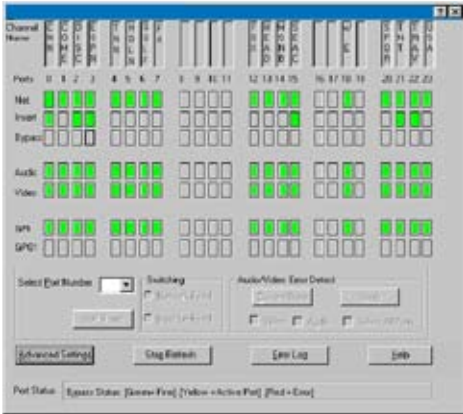


**MANAGEMENT AND CONTROL**

The ISD management utility provides a graphical user interface for the ad server and ISDs. It enables:

- Real time monitoring and management
- Gross and fine adjustment of audio and video outputs

The ISD management utility uses password protection to restrict access for configuration changes



**AUXILIARY SWITCHING UNIT (OPTIONAL)**

The Spot Inserter 2648 can be configured with an optional auxiliary input device (1RU), enabling the Spot System to switch in alternate video sources and monitor analog video output.



**ORDERING INFORMATION**

Sales Order Number	Description
INS-1062-00	Spot 2648, 0 channel (73GB drives minimum)
INS-1062-04	Spot 2648, 4 channel
INS-1062-08	Spot 2648, 8 channel
INS-1062-12	Spot 2648, 12 channel
INS-1062-16	Spot 2648, 16 channel
INS-1062-20	Spot 2648, 20 channel
INS-1062-24	Spot 2648, 24 channel
INS-1063-00	Spot 2648 Longform (73GB drives minimum)
INS-1063-04	Spot 2648 Longform, 4 channel
INS-1063-08	Spot 2648 Longform, 8 channel
FGA-0040-07	ISD Quad Channel Kit (includes 4-channel ISD, ISD breakout panel, ISD cable bundle)

**ISD QUAD CHANNEL KIT FEATURES**

- Supports 4 analog channels
- Break-out panel for input and output connections
- Easy-to-reach BNC and terminal block connectors
- Connectors wired to server with 54-inch high-density cable
- MPEG video decoder
- Decodes standard definition MPEG data encoded at rates from 4 to 8 Mbps
- Support for long form insertion at 4 or 5 3/4 Mbps (Each LF channel is equivalent to 3 insertion channel)
- On-board reconstruction of I, P, and B frames
- Supports all major video standards: NTSC, PAL, PAL-M, PAL-N, Combination PAL-N
- Extracts closed caption information from user data fields and inserts it into Line 21 Field 1 of the NTSC output
- MPEG 1 Layer 2 audio decoder
- MPEG audio Layers 1 and 2 at 32 kHz, 44.1 kHz, and 48 kHz
- Video and audio genlock input ports
- Audio input port supports two balanced audio channels
- One-year warranty and support

**SPOT INSERTER 2648 REQUIREMENTS**

- Spot System V4.5 or higher
- Vstream V4.3 or higher
- Microsoft® Windows® 2003 Embedded Server

**SPOT INSERTER 2648 LIMITATIONS**

- ISD quad channel kit is not hot swappable
- Does not support channel sharing